



Printables for “Bead cards (find the difference)”

KNPIG ID # A 3341.4 – PURPLE

This file contains printables for two students or a small group of students.

For each additional pair of students print 1 new activity file.

- 2 Instructional Pages - Bead cards – Difference
- Bead Cards: Set A (Black & White) – Bead rack arrangements of 15 to 26 beads with numerals. -12 Bead Cards in total.
- Bead Cards: Set A (Colored) – Bead rack arrangements of 15 to 26 beads with numerals. -12 Bead Cards in total.

Print two sets of EITHER the black and white set OR the color set.

To print just the black & white Bead Cards print pages 4 - 6.

To print just the colored Bead Cards print pages 7 - 9.

Teacher Note: If images can be seen through the back of the card, place cards under a screen in lieu of turning face down.

Bead cards – Difference

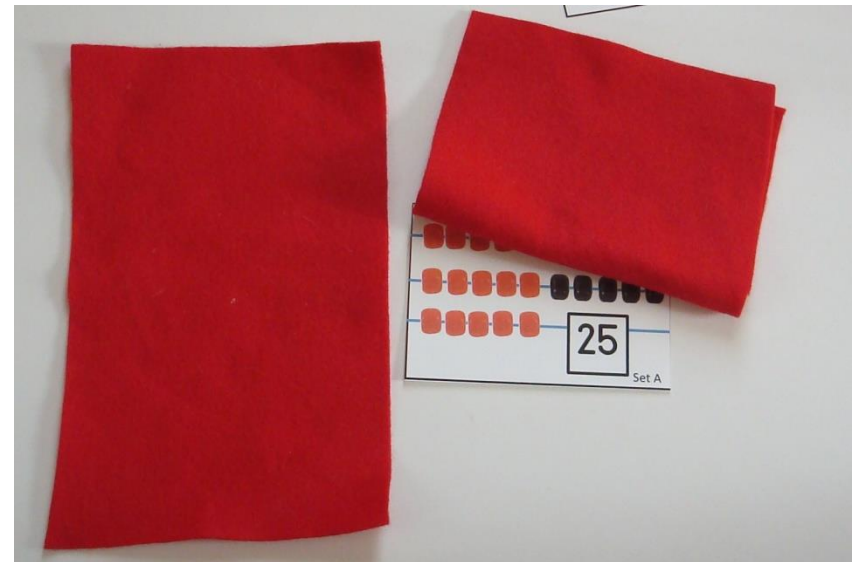
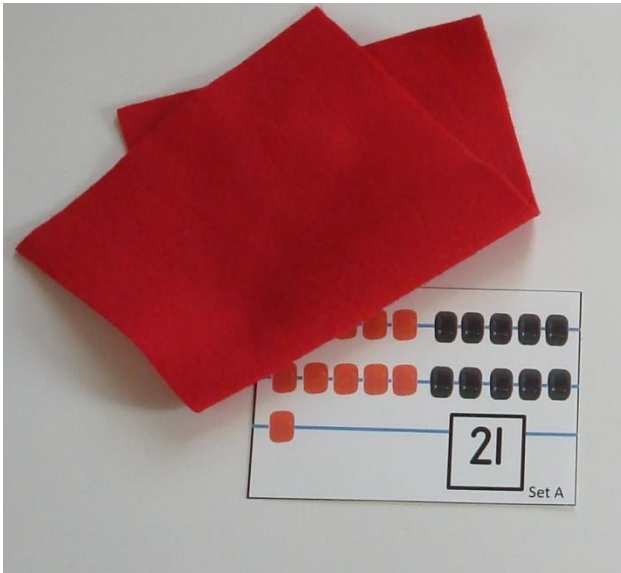
Before play:

Print & cut apart at least 2 copies of Card Set A

During a turn:

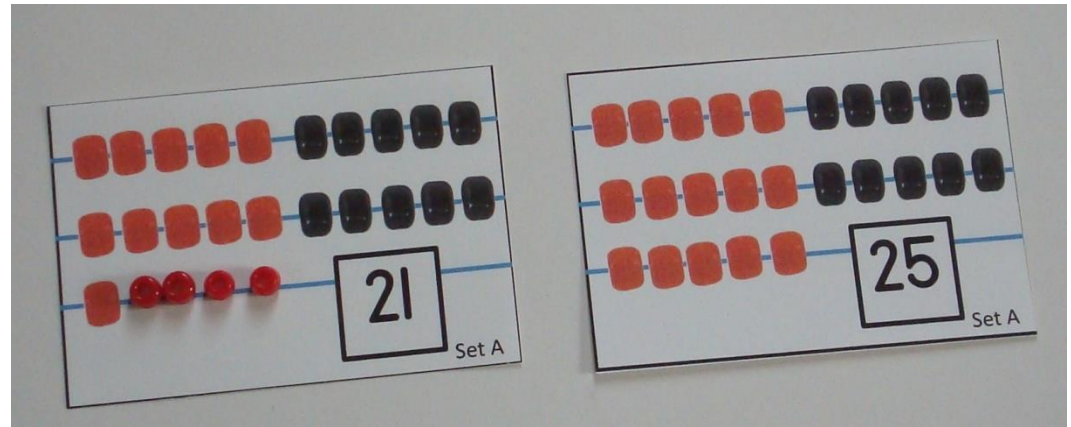
(1) Student will draw 1 card from Set A, look at the card briefly and then turn card face-down and/or cover the card.

(2) The student will then draw a 2nd card from Set A and will cover it after a brief glance. Student will then determine the difference.



Scaffolding:

Initially, students may need to compare cards directly to determine difference. For students needing more support, allow students to draw or lay down beads to solve.

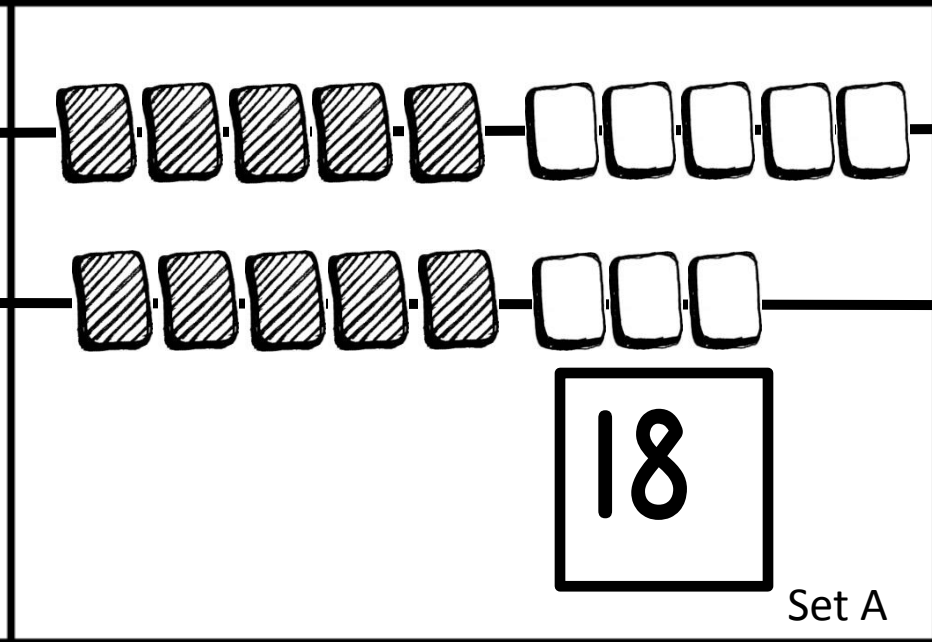
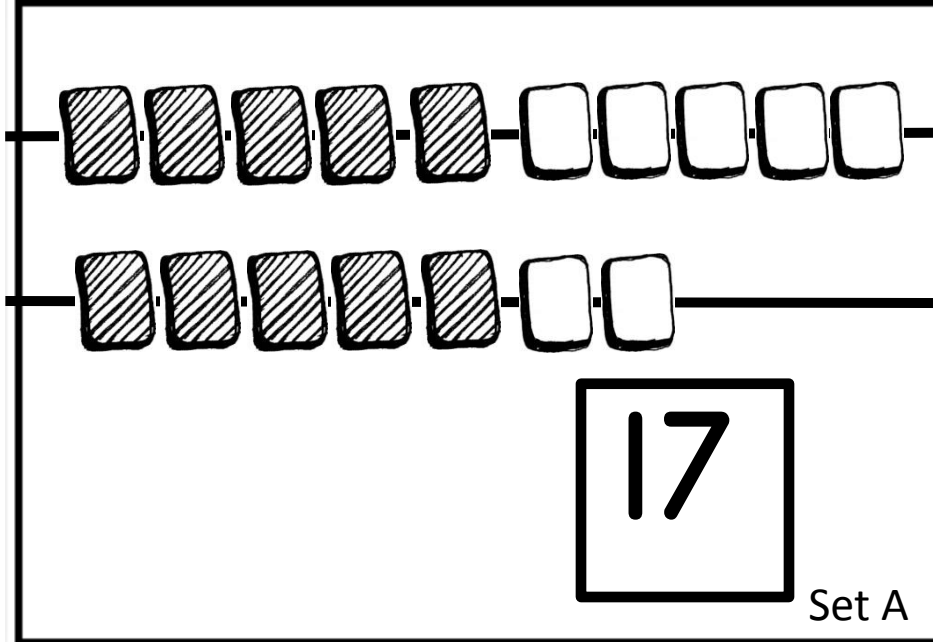
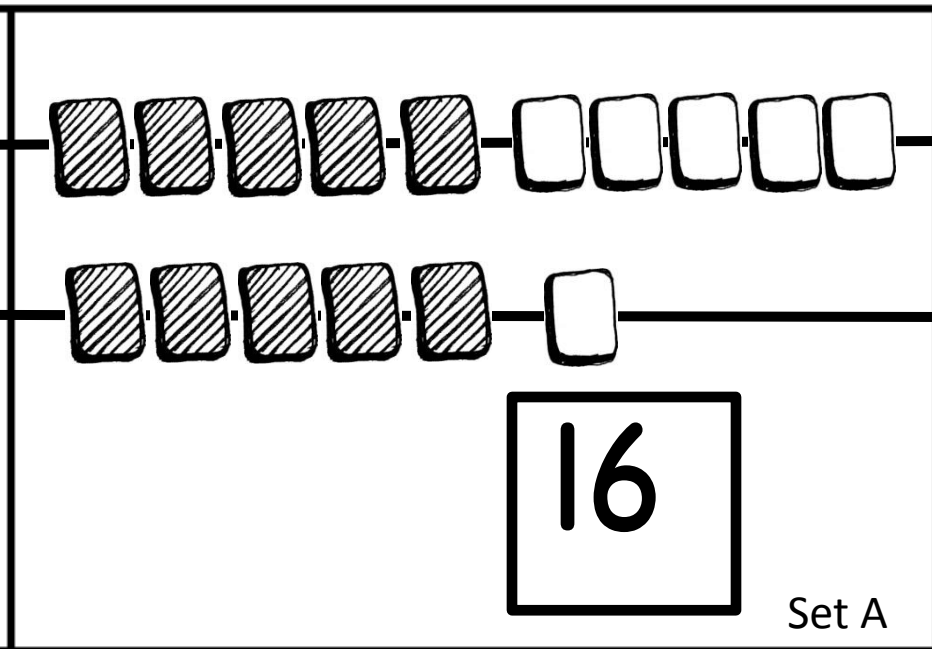
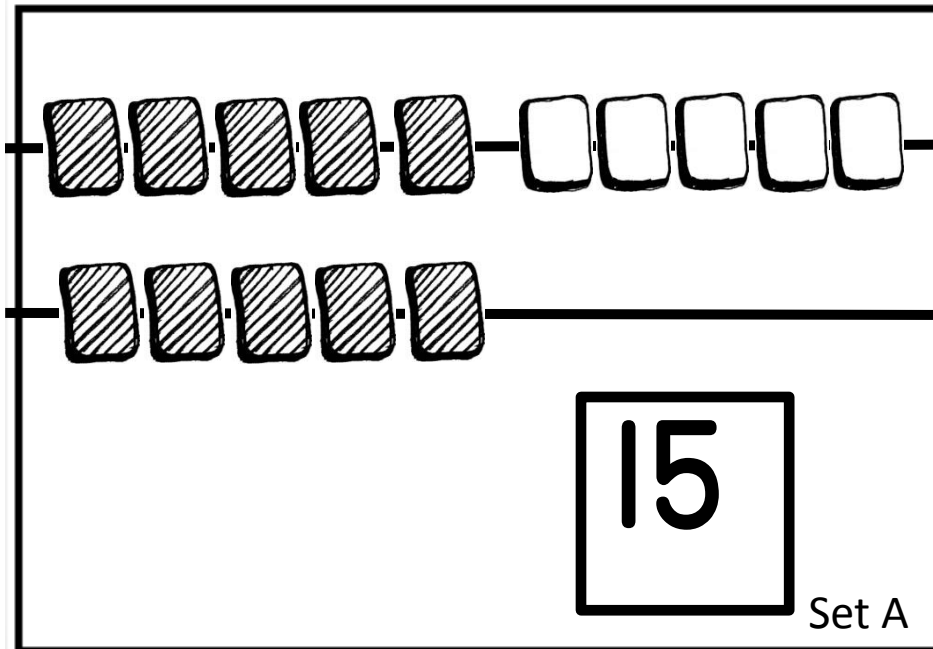
**Extensions:**

Students can be asked to write a corresponding addition (missing addend) equation or subtraction equation. For example, a student might write:

$$21 + \underline{\quad} = 25 \quad \rightarrow \quad 21 + 4 = 25$$

OR

$$25 - 21 = \underline{4}$$



19

Set A

20

Set A

21

Set A

22

Set A

